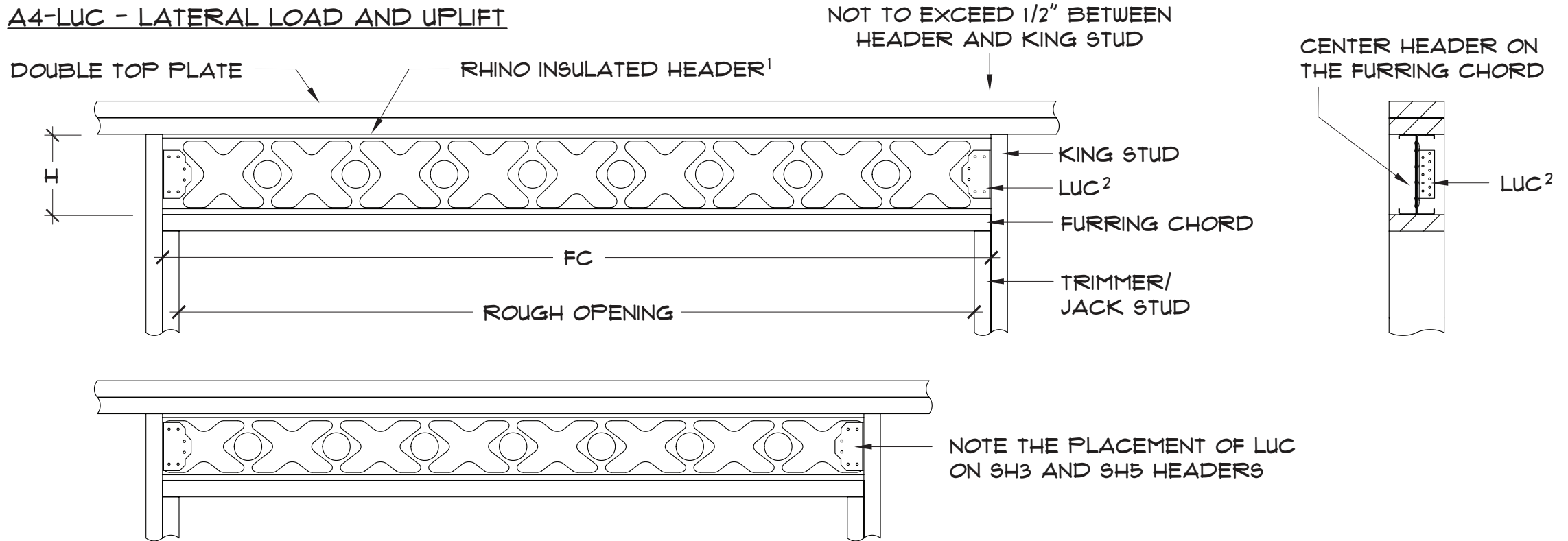


A4-LUC - LATERAL LOAD AND UPLIFT



1. SECURE HEADER WITH $\emptyset.164"$ X 2.5" STRUCTURAL WOOD SCREWS EVERY 6" O.C. ON THE TOP PLATE, AND WITH $\emptyset.148"$ X 1.5" MIN. COMMON JOIST HANGER NAILS EVERY 6" O.C. ON THE BOTTOM FURRING CHORD (FILLING ALL NAIL HOLES NOT REQUIRED).
2. ATTACH LUC TO STEEL HEADER WITH (6) $\emptyset.19"$ X $\emptyset.75"$ SELF TAPPING SHEET METAL SCREWS, AND ATTACH TO KING STUDS WITH (11) $\emptyset.148"$ X 1.5" MIN. COMMON JOIST HANGER NAILS.